

Sage ERP Accpac

Multicompany and International
Operations Management Brochure



See your business
in a new way.

Realize the future of your
business today.

sage



See your business in a new way. Realize the future of your business today.

It's a competitive world for multinational and multientity companies. Prosperous opportunities abound, but so do big business challenges. International businesses operate in multiple currencies and time zones. Your global workforce reports to different divisions or entities that operate independently. Your customers speak many languages. At the end of the day, it's all one business. And you need that to be reflected in your business intelligence and financial reports.

Sage ERP Accpac Multicompany and International Operations Management provides powerful business management tools to help you see your business in a new way so you can improve global operations, consolidate financial results, and accelerate growth. Turn your business dreams into reality with real-time visibility across your business and support for multicurrency transactions and multiple languages you need to succeed.



“Sage ERP Accpac further enabled growth of a centralized hotel accounting office. We can more cost-effectively manage the hotel’s accounting from a central office for properties that may not necessarily require a full accounting team on site. For hotels with accounting departments on property, we reduce training costs and setup time because we standardize on the back-office solution.”

—Ian Rogers, director of corporate accounting
Radisson Hotels & Resorts

A Complete View of Your Multicompany, International Business

No matter where you do business, or how many subsidiaries, divisions, and entities you operate, Sage ERP Accpac Multicompany and International Operations Management helps you maximize business insight, improve intercompany communication, and consolidate global financial results. With the power to bring information together from every corner of your business, Sage ERP Accpac puts critical information at your fingertips for enhanced visibility and easier, more effective daily and long-term planning.

- Set up multiple companies in one or more databases, run processes, close books, and report results by company or in a consolidated company.
- Effortlessly bring together, analyze, and report on multiple business units, subsidiaries, companies, and countries within your organization.
- Strengthen collaboration between locations when you integrate systems and enhance connectivity.
- Leverage business intelligence to consolidate financial information across multiple companies.
- Easily conduct business worldwide with built-in support for multiple languages and multicurrency transactions.
- Capitalize on the global economy by supporting and guiding subsidiaries nationally and internationally.



“A large amount of our consolidation used to happen as an end-of-the-day process—with information from the various areas of our business being integrated manually. The Sage ERP Accpac solution will streamline our operations significantly, enabling us to speed up bookings, sales order processing, and new memberships. For example, we now have a live link from our London operations to our main systems in Edinburgh, from where we operate our mail order business and dispatch items purchased from our online shop.”

—Joan Saywood, Head of Finance
Scotch Malt Whiskey Society

Designed for Growth

As your business reaches around the globe, you'll need a business management solution that is designed to grow with your evolving business needs. Not only is Sage ERP Accpac specifically designed to support international businesses, it also keeps your total cost of ownership low by supporting multiple technologies, databases, and operating systems. Available in multiple editions, Sage ERP Accpac gives you the opportunity to add users and adopt greater functionality as your business grows.

Superior architecture allows you to grow with the changing size of your business, customize easily to fit special needs, and offer flexible deployment options and languages.

An end-to-end business management solution for your specific business offers a wide range of high-quality integrated vertical tools to match your unique needs and a strong network of more than 400 development partners.

Ease of installation enables you to quickly roll out Sage ERP Accpac in many locations.

Ultimate scalability offers extensive customization capabilities and the ability to easily add functionality when you need it.

Anytime, anywhere access provides complete access to your accounting system through a standard web browser.

Ease of use with intuitive wizards and a familiar interface make configuration and navigation a breeze.

Global network of support is provided by business partners and customers in over 150 countries.



Comprehensive Multientity Accounting

Most businesses that operate internationally do so under a number of subsidiaries or other legal entities. In some cases, these are like divisions of one company in disparate locations. In other operational models, the subsidiaries may function like independent businesses from day to day. One thing is always true: To make successful strategic plans and achieve financial objectives, your corporate headquarters needs accurate, reliable multientity accounting that is easy to implement and use. With Sage ERP Accpac, you'll effortlessly process intercompany transactions and roll up the numbers across all entities for precise insight into the overall financial health of your business.

Sage ERP Accpac G/L Consolidations

Sage ERP Accpac Multicompany and International Operations Management allows both hard and soft consolidations of general ledger transactions. Transfer and merge General Ledger account and transaction information between separate company and branch office locations. It is also designed to enable subsidiaries and holding companies to run without being on the same network or accounting database. Sage Accpac ERP provides a feature set that allows your company to define the level of detail to consolidate and provides a comprehensive audit trail.

- **Consolidate multiple general ledgers** by transactions, net period changes, or account balances. Maintain a separate general ledger for your consolidated ledgers or consolidate with the head office or central general ledger.
- **Consolidate general ledgers with differing fiscal years** and periods and with different account structures by using a mapping table.
- **Include budgets** for a range of years in the consolidated company.
- **Consolidate all accounts or a partial set** of accounts using the automatic balancing account (exclude entries from the consolidation if needed).
- **Merge multiple accounts in subsidiaries** into single holding company accounts.
- **Transfer transactions originating in a holding company** back to subsidiaries to centrally maintain payroll or fixed assets.
- **Automatically perform currency translation** with the provision of gain or loss on translation. Translate amounts from functional currency or source currency in the originating ledger, and specify the translation rate type.
- **Consolidate multicurrency and single currency accounts** and general ledgers with differing functional currencies.



SAMINO - G/L Consol. Export Setup

File Help

Process ID: SAMLTD Export to Sample Company, LTD.

Main Transactions Criteria Currency Mapping

Unit

Unit ID: 01 Unit Balancing Account: Description:

Data

☐ Accounts ☐ Export Inactive Accounts ☐ Set Inactive Accounts To Active ☐ Account Opt. Fields

☐ Source Codes ☐ Segment Codes ☐ Account Groups ☐ Optional Fields from G/L Setup

☐ Budgets ☐ Transactions ☐ Optional Fields from C/S Setup

☐ Allow Runtime Edit

Add Delete

Accurate, reliable
multientity
accounting that is
easy to implement
and use.

Sage ERP Accpac Intercompany Transactions

When you're keeping track of dealings between multiple entities or subsidiaries, it's important that your accounting system accurately reflects intercompany transactions. This functionality in Sage ERP Accpac Multicompany and International Operations Management simplifies and significantly reduces the amount of work required for intercompany accounting. Enter transactions that affect more than one company and Sage ERP Accpac will automatically distribute these transactions across two or more companies. In addition, built-in flexibility automatically generates intercompany loan account entries according to relationship tables (called routes) that you can define. If the different companies are operating under different local currencies, Sage ERP Accpac will adjust for that, too.

- **Enter simplified and automated intercompany transactions** for any number of companies, with multicurrency support and a comprehensive audit trail.
- **Automatically create loan account entries** for intercompany transactions.
- **Process intercompany General Ledger** journal entries and intercompany Accounts Payable invoices, debit notes, and credit notes.
- **Automatically distribute invoices** to as many general ledger accounts as you require by defining distribution sets.
- **Create an unlimited number of routes** to define relationships between companies, including multilevel routes between companies with any number of intermediate companies.
- **Fully integrate with Tax Services** to handle tax computations for expensed, allocated, or recoverable taxes.

The screenshot shows the 'ICTCO - ICT Options' dialog box. It has a menu bar with 'File' and 'Help'. Below the menu bar, there are fields for 'Functional Currency' (set to 'USD') and a checked 'Multicurrency' checkbox. The main area contains a table with the following columns: 'Comp...', 'Company Name', 'Status', 'Func. Curr...', 'Post G/L Batches', 'Post A/P Batches', 'A/P Clearing ...', and 'Account Desc...'. The table has two rows of data: one for 'SAMINQ' (Sample Company ...) with 'Active' status, 'USD' currency, and 'Yes' for both batch types, and another for 'SAMLTK' (Sample Company ...) with 'Active' status, 'CAD' currency, and 'Yes' for both batch types. Below the table, there are two sections: 'ICT General Ledger' and 'ICT Accounts Payable'. Each section has two input fields: 'Next Batch' and 'Next Posting Sequence'. For 'ICT General Ledger', the values are 2 and 1 respectively. For 'ICT Accounts Payable', the values are 2 and 1 respectively. At the bottom, there are four buttons: 'Save', 'Update Company Information', 'Update Accounts', and 'Close'.

Comp...	Company Name	Status	Func. Curr...	Post G/L Batches	Post A/P Batches	A/P Clearing ...	Account Desc...
SAMINQ	Sample Company ...	Active	USD	Yes	Yes	2040	Accts payable...
SAMLTK	Sample Company ...	Active	CAD	Yes	Yes	2040	Accts payable...

ICT General Ledger ICT Accounts Payable

Next Batch 2 2

Next Posting Sequence 1 1

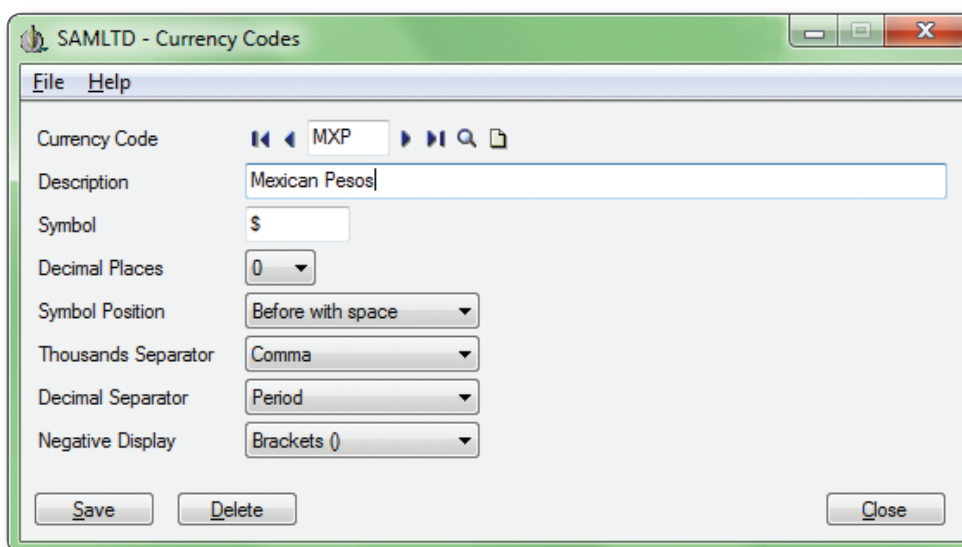
Save Update Company Information Update Accounts Close

Support for International Operations

Sage ERP Accpac is designed to help you manage business operations around the world with one global ERP application. The flexible configuration of Sage Accpac ERP makes it easy to set up powerful localization capabilities, including the ability to do business in multiple currencies and multiple languages.

Sage ERP Accpac Multicurrency

To grow your business worldwide, you will need to make transactions in multiple currencies. When you are buying, suppliers may prefer to price goods or services in the local currency or another currency. When you're selling, your customers expect you to accept payment in their currency. Management needs to be able to analyze the financial results of each subsidiary in both local currencies and the company headquarters' functional currency. Finally, the corporate executive team needs analysis of the impact of fluctuating currency values on global financial results.



Sage ERP Accpac Multicompany and International Operations Management delivers powerful and comprehensive multicurrency accounting functions. It supports an unlimited number of currencies and rate types and offers complete support for the euro, as well as full EMU accreditation. Give your business a global competitive edge with sophisticated currency management. Sage ERP Accpac empowers your accounting professionals to:

- Use an unlimited number of currencies and rate types.
- Enter transactions in any currency.
- Process payments and receipts in any number of currencies.
- Print reports in both functional and source (local) currencies.

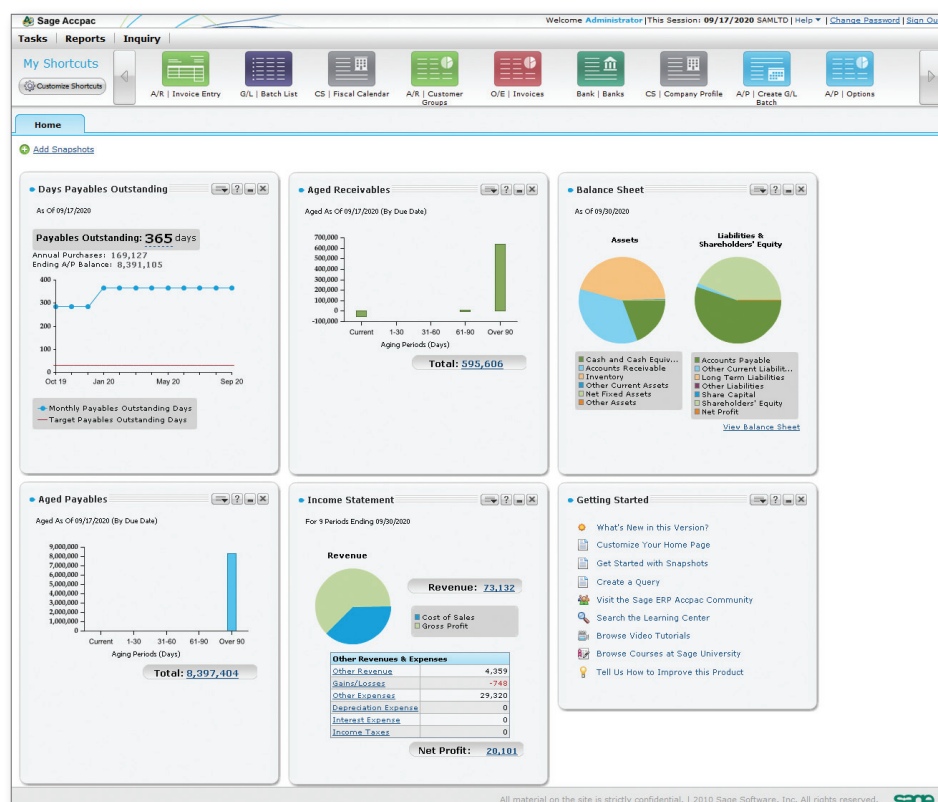


“Across our enterprise, we are using the U.S. dollar, the Canadian dollar, the Australian dollar, the Mexican peso, and other currencies . . . our core accounting needs are not out of the ordinary, but when coupled with the multicurrency and consolidation requirements, we need a powerful, scalable application, and Sage ERP Accpac completely fills the bill. It handles the accounting for the various currencies extremely well.”

—Christien Landry, IT manager
Major Drilling Group International

Sage ERP Accpac Multiple Languages

It's easier to use business management software when you can interact with it in your most comfortable, native language. That's why Sage ERP Accpac is designed with multilanguage support. Achieve true global localization in this core business management system using language translations set up by system user. Sage ERP Accpac comes with five languages included, and it is fully translatable for additional languages.



All over the world, your business needs to speak with one voice to your employees, your suppliers, and your customers. Sage Accpac ERP Multicompany and International Operations Management provides powerful yet easy-to-use tools to help you do just that—from support for multiple languages and multicurrency transactions to consolidated financial results and business intelligence. Whether you operate as one company, ten divisions, or 100 entities, you can lead your business to profitability and success and with Sage Accpac ERP.



Visit
www.SageAccpac.com
or call us at 1-866-530-7243
for more information today!

Sage ERP Accpac

6561 Irvine Center Drive | Irvine, CA 92618 | 1-866-530-7243 | www.SageAccpac.com

©2011 Sage Software, Inc. All rights reserved. Sage, the Sage logos, and the Sage product and service names mentioned herein are registered trademarks or trademarks of Sage Software, Inc., or its affiliated entities. All other trademarks are the property of their respective owners. SPK 11-01484 08/11

