

sage

Smart Business Decisions Begin with Sage Intelligence

Sandra Smith



SWKTECHNOLOGIES

2021

EMPOWER

Virtual Conference

Sage Intelligence



- Reporting tool
- Pre-built Excel templates
- Edit report formatting and formulas using existing Excel
- Create new reports
- Design financial reports
- Distribute reports
- View data from multiple sources



A woman with long brown hair and blue eyes, wearing a light pink patterned top, is sitting at a desk with a laptop. She is looking towards the camera with a slight smile. The background is a bright, out-of-focus office window.

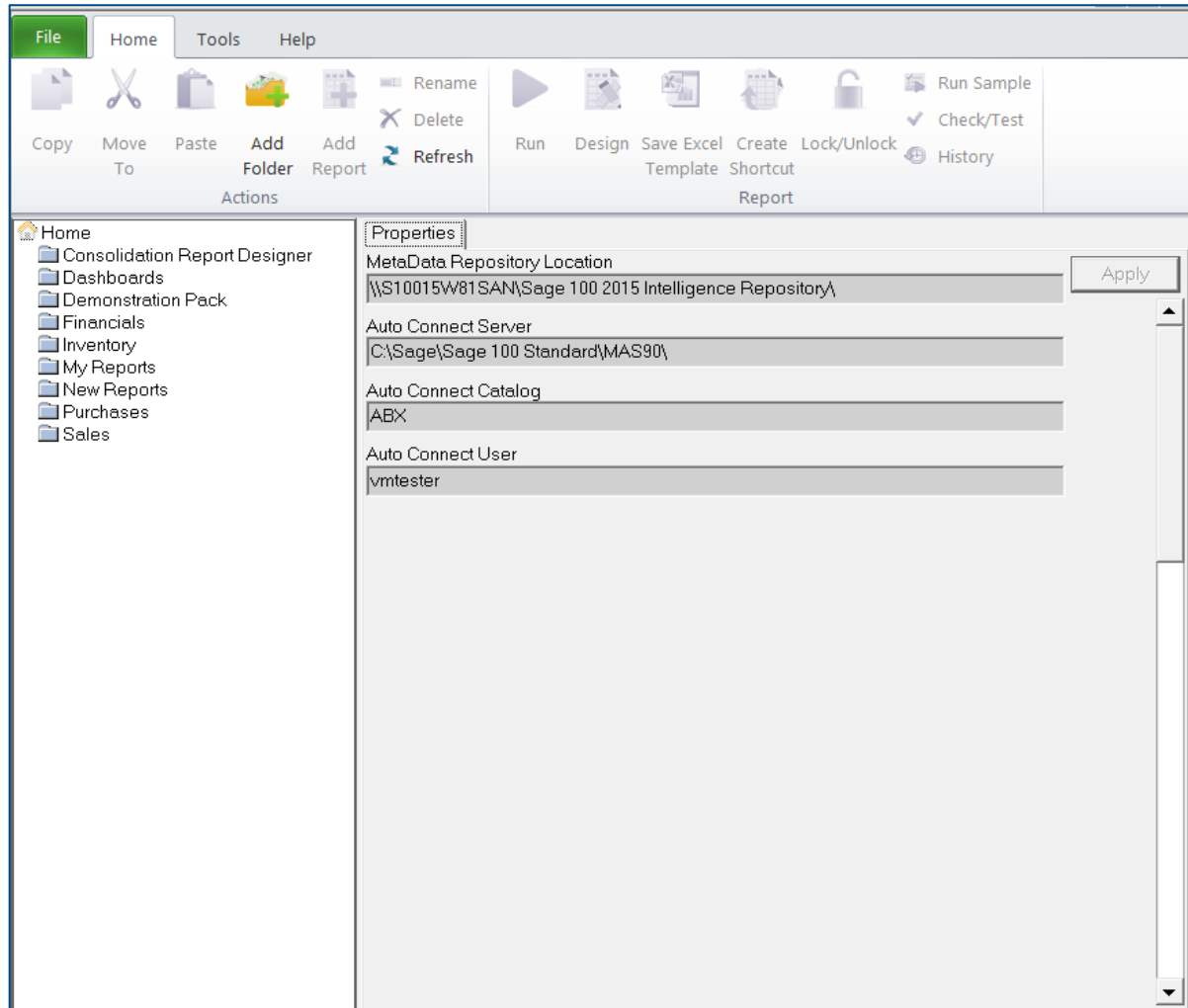
**What does that mean
for me?**



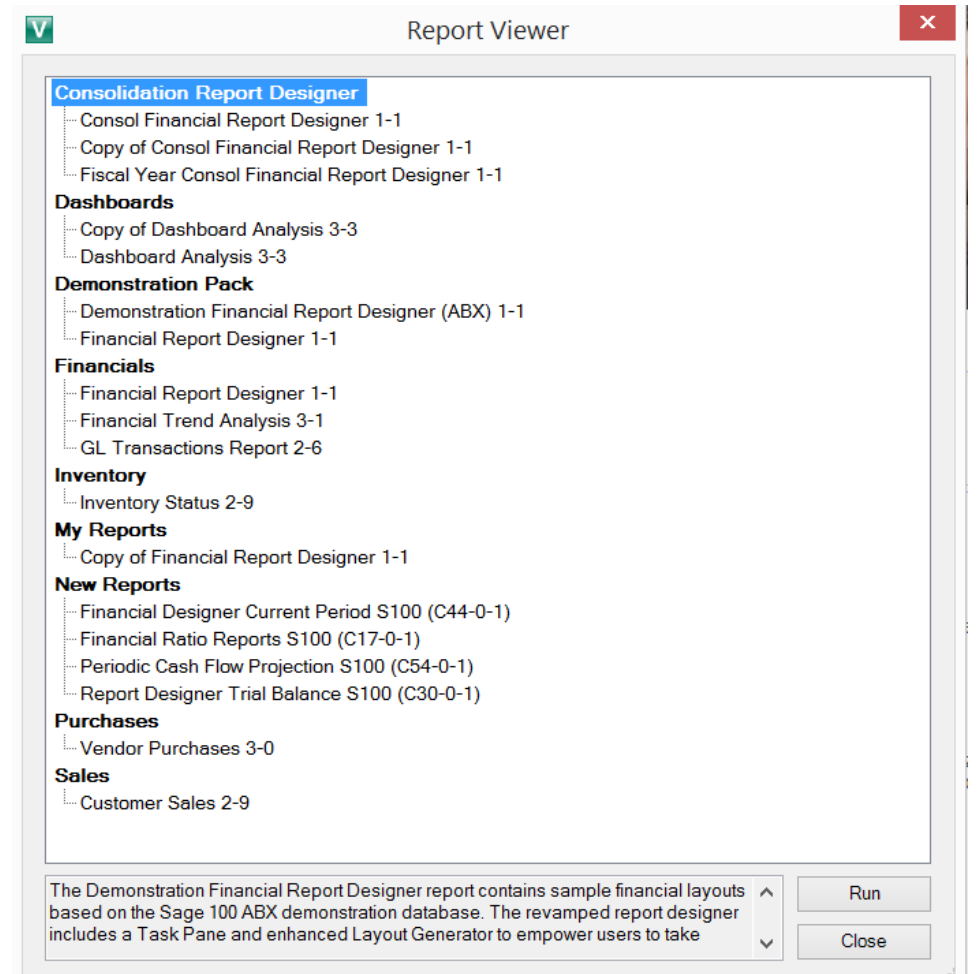
Control Your Data

- All reports are run and distributed from Sage Intelligence
- Manage who runs reports - set report permissions per user
- Manage who receives reports
- All data directly from Sage 300 and your business sources
- No copy/paste – all reports are updated when run

Manage your reports using the Report Manager



Viewer – Optional to run, not edit reports



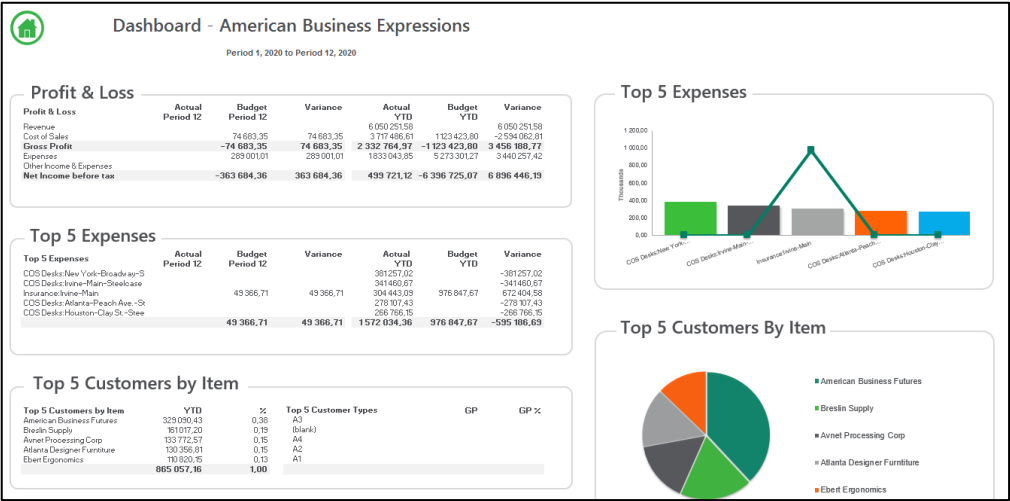
Pre-built reports

- Analyze your business data: financials, sales, inventory, purchasing, etc.
- Pre-formatted using Excel
- Additional, helpful, pre-formatted reports from www.sageintelligence.com/resources



Standard Reports

- Dashboard Analysis
- Dashboard Analysis AR
- Financial Trend Analysis
- GL Transaction Details
- Sales Master
- Sales Master AR
- Inventory Master
- Purchase Master
- Financial Designer (requires Designer Module)
- Financial Balance Sheet
- Financial Forecasting
- Financial Income Statement
- Financial Ratio
- Financial Report Designer



SAMLTD Balance Sheet

Current Year: 2020
Current Period: 12
Company: SAMLTD
Currency: CAD
Currency Type: F

	Opening Balance	Quarter 1	Quarter 2	Quarter 3	Quarter 4	Current Month Change	Year to Date
		3	6	9	12		
Assets							
Non Current Assets	300 462.37	1 165 462.37	1 650 568.37	1 651 628.37	1 651 628.37	0.00	1 351 166.00
Current Assets	11 931 701.45	14 169 239.04	16 732 692.52	16 711 658.08	16 711 658.08	0.00	4 779 956.63
TOTAL ASSETS	12 232 163.82	15 334 701.41	18 383 260.89	18 363 286.45	18 363 286.45	0.00	6 131 122.63
Shareholders Equity & Liabilities							
Shareholders Equity	(1 232 265.39)	(733 073.17)	(225 796.62)	(241 193.91)	(241 193.91)	0.00	991 071.48
Non Current Liabilities	300 963.54	264 963.54	240 963.54	240 963.54	240 963.54	0.00	(60 000.00)
Current Liabilities	13 163 465.67	15 802 811.04	18 368 093.97	18 363 516.82	18 363 516.82	0.00	5 200 051.15
TOTAL SHAREHOLDERS EQUITY & LIABILITIES	12 232 163.82	15 334 701.41	18 383 260.89	18 363 286.45	18 363 286.45	0.00	6 131 122.63

FINANCIALS

layouts lists formulas 1...

Manage

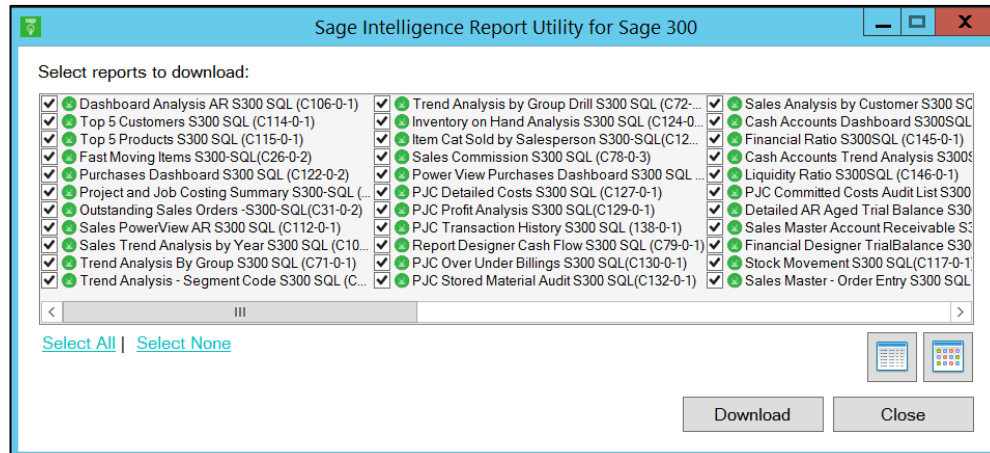
- Balance Sheet
- IS - Actual Budget Prior
- IS - Actual vs Budget
- IS - Actual vs Prior

Additional Reports to Download from Site



Easy download

- From www.sageintelligence.com
- Icon on desktop accesses the report list
- Fast download to Report Manager folder
- Preview of each report



Home > Additional Reports > Sage 300 Intelligence Reporting

Sage 300 Intelligence Reporting

Free reports suitable to your business needs

Report Utility

The Report Utility allows you to select the reports you would like and automatically imports these reports into a "New Reports" folder in your Sage Intelligence Report Manager module.

[Download](#)

Can't find the report you are looking for? We'd love to hear your report ideas.
[Click here to submit your idea](#)

Sage 300 SQL Cash Management	Open	+
Sage 300 SQL Dashboard Reports	Open	+
Sage 300 SQL Financial Reports	Open	+
Sage 300 SQL Inventory Reports	Open	+
Sage 300 SQL Power View Reports	Open	+
Sage 300 SQL Project and Job Costing Reports	Open	+
Sage 300 SQL Sales Reports	Open	+
Sage 300 SQL Vendor Reports	Open	+

Sales Flash Report for the period 01 Jan 2020 to 31 Dec 2020

Total Sales for the period : 6 744.86	8 customers were invoiced during this period. CanAm Industries - 1 720.00, had the highest sales and Bargain Mart - San Diego - 186.30, had the lowest sales for the period.	Daily sales on : 15-May-20 335.00
Average sale for the period 843.11	Rhonda Barnes was the top sales person, selling 65.03% of the sales and David Sanjos was the lowest sales person, selling 5.67%.	Daily average sale 111.67
Highest sale for the period 1 720.00		Daily highest Sale 300.00
Lowest sale for the period 186.30		Daily lowest Sale 12.50

Top 10 States sales

Top 10 Customer sales

Top 10 Sales Rep contributions

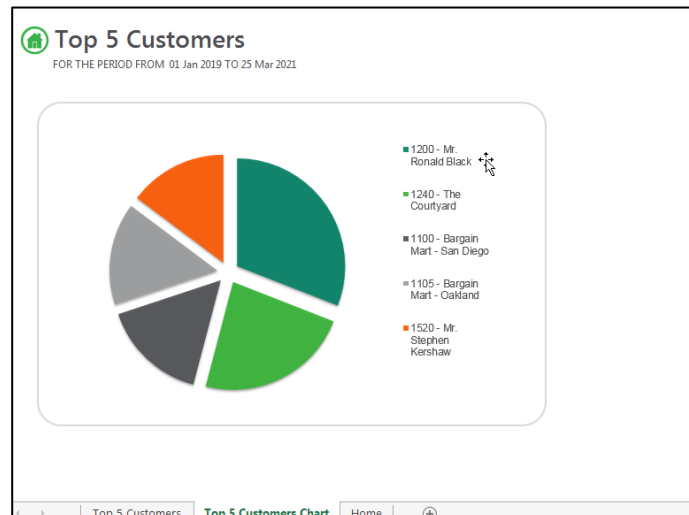
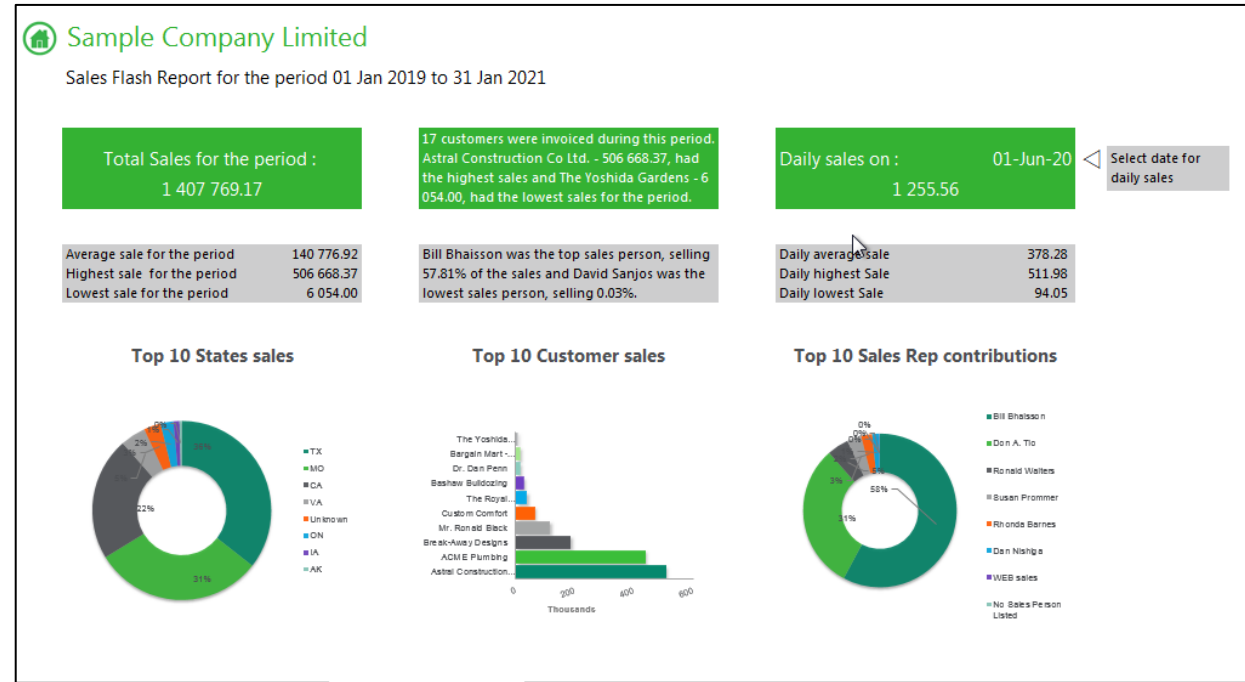
Title
Sales Flash Report AR S300 SQL (C69-0-2)

Description
The Report allows you to analyse your Sales data for the period selected at run time. There are 2 layout options. If you are using Functional & Source Currency both these layouts are available.

Category
Sage 300 SQL Sales Reports

[Download](#)

- Dashboards
- Cash Flow
- Ratio reports
- Project and job costing
- Sales indicators



Sage Intelligence
Project And Job Costing Summary
as at 28 Feb 2017

CONTRACT (All)

CONTRACT NAME	PROJECT	GROUP BY PROJECT	CATEGORY	CATEGORY DESCRIPTION	Original Estimated Quantity	Original Estimated Unit Cost	Total Original Estimated Amount	Current Estimates Quantity	Current Estimates Unit Cost	Total Current Estimated Cost	Actual Quantity	Actual Total Cost
Set up office for Coastal Electric Company					874	\$12 253.66	\$79 173.80	506	\$5 683.46	\$35 375.20	82	\$1 132.84
1001	Design office		MGT LABOR	Management labor	48	\$44.00	\$1 056.00	48	\$44.00	\$1 252.80	0	\$0.00
			SUBCONTR	Consultant/Contractor	60	\$84.00	\$2 520.00	60	\$84.00	\$2 646.00	0	\$0.00
1002	Install white melamine board		INST LABOR	Install Labor	20	\$16.00	\$160.00	20	\$16.00	\$228.00	0	\$0.00
			PRCHWHITBRD	White melamine board	20	\$39.98	\$399.80	20	\$39.98	\$419.80	18	\$508.84
1003	Custom wall unit/book shelf		BLDBKSHLF	Build custom book shelf	8	\$800.00	\$3 200.00	8	\$800.00	\$3 360.00	0	\$0.00
			BLDWALLU	Build custom wall unit	8	\$1 000.00	\$4 000.00	8	\$1 000.00	\$4 200.00	0	\$0.00
			MGT LABOR	Management labor	32	\$36.00	\$576.00	32	\$36.00	\$700.80	0	\$0.00
1004	Stock office supplies		OV/RHEAD	Overhead cost	36	\$8.00	\$144.00	18	\$4.00	\$75.60	0	\$0.00
			PRCHSTATIONERY	Set up office supplies room	2	\$5 000.00	\$5 000.00	1	\$2 500.00	\$2 625.00	0	\$0.00
			SETUPLABOR	Setup labor resource	36	\$16.00	\$288.00	18	\$8.00	\$205.20	40	\$480.00
1005	Set up credenza in boardroom		PRCHCREDEZA	Setup boardroom credenza	2	\$1 950.00	\$1 950.00	0	\$0.00	\$0.00	0	\$0.00
			SETUPLABOR	Setup labor resource	16	\$18.00	\$144.00	0	\$0.00	\$0.00	0	\$0.00
1006	Place filing cabinets		INST LABOR	Install Labor	32	\$16.00	\$256.00	16	\$8.00	\$182.40	0	\$0.00
			PRCHCABINET	Place filing cabinet	52	\$758.00	\$19 708.00	26	\$379.00	\$10 346.70	0	\$0.00

Collaboration through distribution

- Send to email, to file, to ftp, to website
- Send as Excel file, as PDF
- Send with formulas visible or not visible
- Auto send



Flexibility in editing reports in Excel

- Use your existing Excel skills
- Easily edit the report to fit your business needs using all Excel features
- Save all changes to Sage Intelligence - no need to copy/paste
- Updated data when report runs



Customize existing templates and create new financial reports



- Use the Report Designer and Excel to build/edit your financial report
- Use lists, formulas, trees to create report the way you want it to look

SAMLTD Balance Sheet							
Current Year:	2020						
Current Period:	12						
Company:	SAMLTD						
Currency:	CAD						
Currency Type:	F						
	Opening Balance	Quarter 1	Quarter 2	Quarter 3	Quarter 4	Current Month	Year to Date
		3	6	9	12	Change	
Assets							
Non Current Assets	300 462.37	1 165 462.37	1 650 568.37	1 651 628.37	1 651 628.37	0.00	1 351 166.00
Current Assets	11 931 701.45	14 169 239.04	16 732 692.52	16 711 658.08	16 711 658.08	0.00	4 779 956.63
TOTAL ASSETS	12 232 163.82	15 334 701.41	18 383 260.89	18 363 286.45	18 363 286.45	0.00	6 131 122.63
Shareholders Equity & Liabilities							
Shareholders Equity	(1 232 265.39)	(733 073.17)	(225 796.62)	(241 193.91)	(241 193.91)	0.00	991 071.48
Non Current Liabilities	300 963.54	264 963.54	240 963.54	240 963.54	240 963.54	0.00	(60 000.00)
Current Liabilities	13 163 465.67	15 802 811.04	18 368 093.97	18 363 516.82	18 363 516.82	0.00	5 200 051.15
TOTAL SHAREHOLDERS EQUITY & LIABILITIES	12 232 163.82	15 334 701.41	18 383 260.89	18 363 286.45	18 363 286.45	0.00	6 131 122.63

FINANCIALS

layouts lists formulas 1...

Manage

Balance Sheet

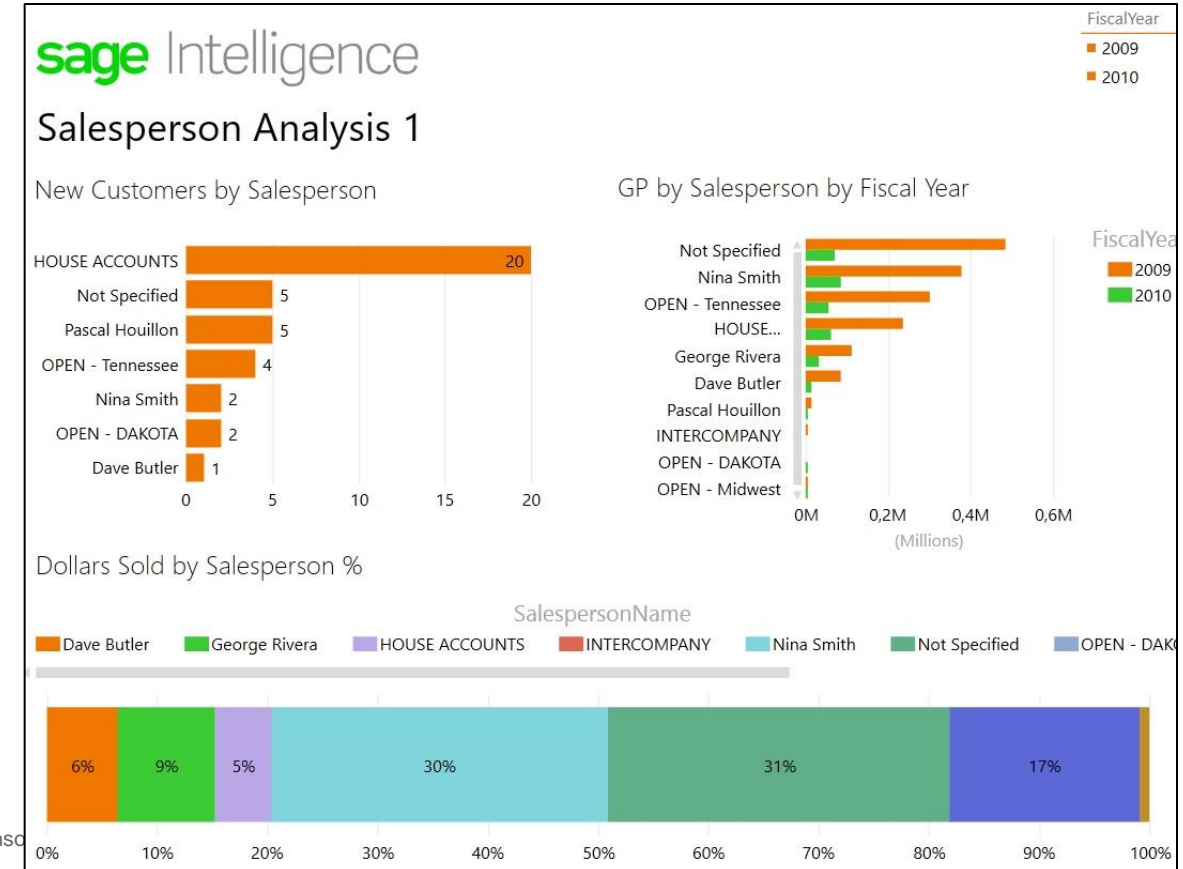
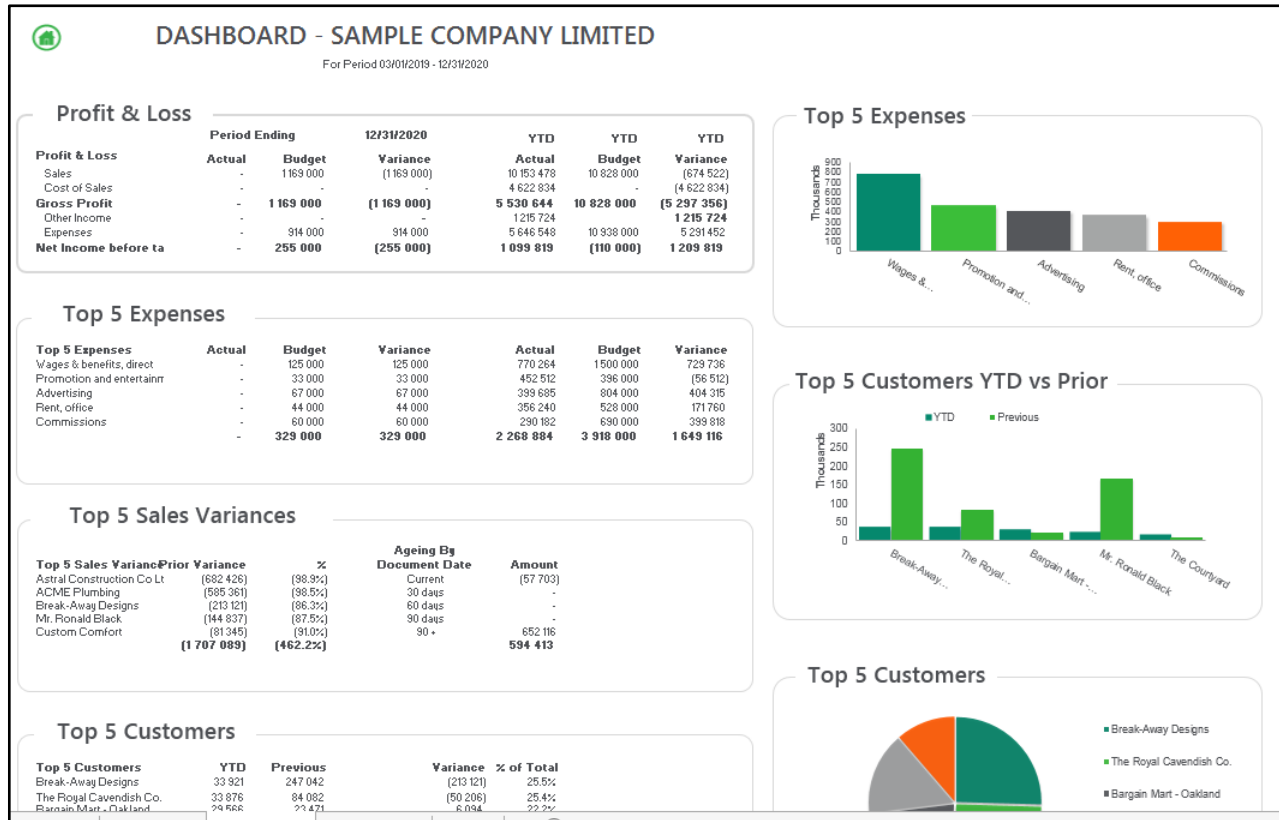
IS - Actual Budget Prior

IS - Actual vs Budget

IS - Actual vs Prior

...according to your business needs

Create Dashboards Using Microsoft Excel



Financial Report Designer

Drill down

Drill down to supporting data

Company Code: SAMLTD
Fiscal Year: 2020
Currency: CAD
Currency Type: F
Structure Code:
Budget Set Code:
Reporting Tree Unit:

1250 + 1500 TO 1730

1250
1500
1520
1540
1550
1600
1620
1640
1700
1710
1720
1730

Non Current Assets

Investment, long-term
Furniture and fixtures
Equipment
Buildings
Land
Acc. Amortization/Depr.
Acc. Amort./Depr.Equipment
Acc. Amort./Depr.Buildings
Leasehold improvements
Acc. amortization, leasehold
Organization costs
Acc. amortization, org. costs

1000 TO 1200 + 1300 TO 1440

Current Assets

Total Assets

Notes | Home | **Balance Sheet** (+)

Company	Account	Account Description	Account
SAMLTD	1500	Furniture and fixtures	ACC
Total			

Closing Balance

260 4
102 9
659 8
300 0

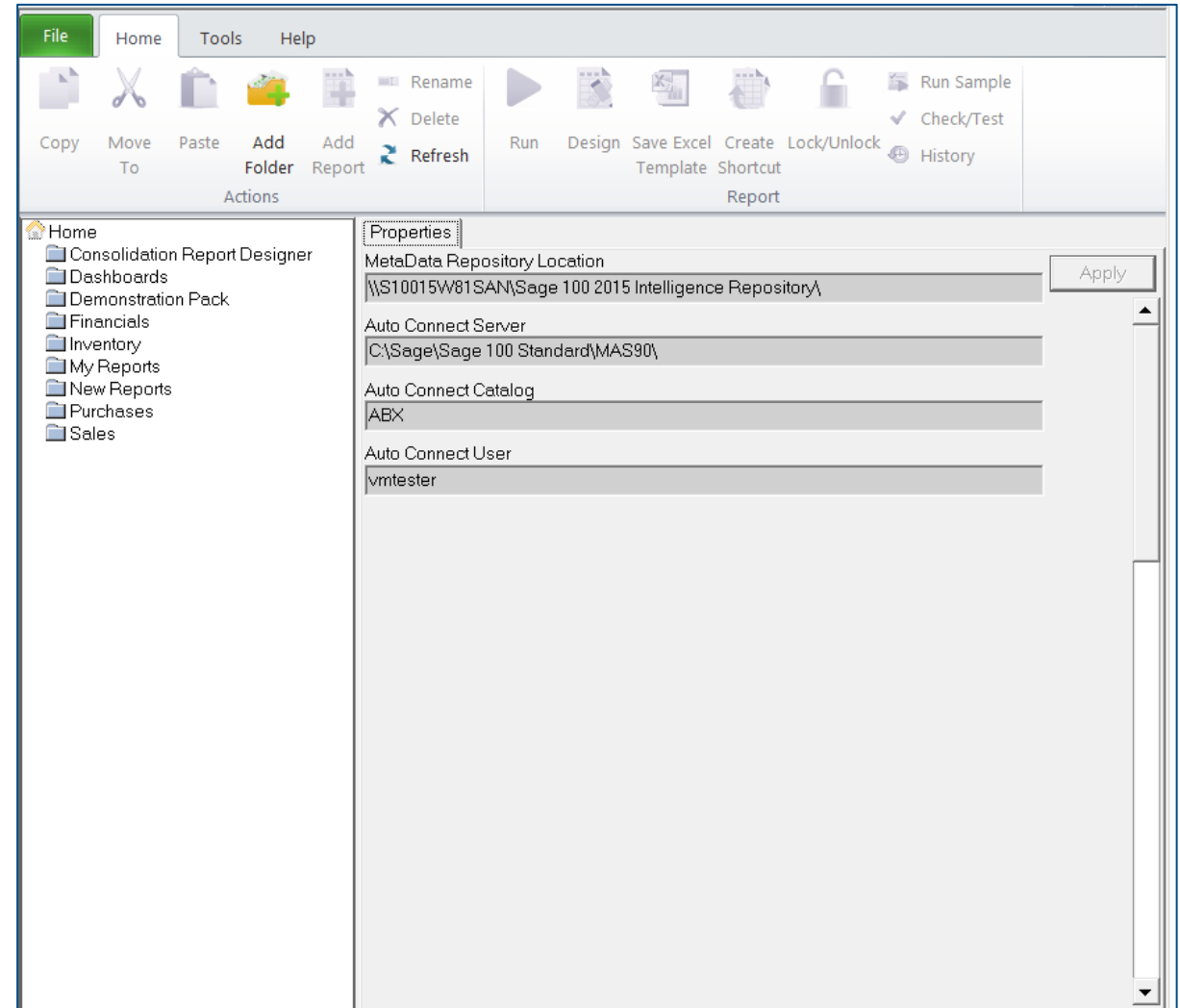
715 462
102 996
1 159 893
300 000

Copy of Financial Report Designer S300SQL 1-21.xlsx - Excel

	A	B	C	D	E	F	G	H	I	J	K	L	M
	Compan	AccountNumbe	UniqueAccountKe	Yea	Period	Currenc	CurrencyTyp	BudgetSetCod	DebitAmoun	CreditAmoun	BudgetAmoun		
1	SAMLTD	4000	4000 - SAMLTD	2019	01	CAD	F	01	0	-300000	-300000		
2	SAMLTD	4000	4000 - SAMLTD	2019	02	CAD	F	01	0	-300000	-300000		
3	SAMLTD	4000	4000 - SAMLTD	2019	03	CAD	F	01	0	-300000	-300000		
4	SAMLTD	4000	4000 - SAMLTD	2019	04	CAD	F	01	0	-400000	-400000		
5	SAMLTD	4000	4000 - SAMLTD	2019	05	CAD	F	01	0	-400000	-400000		
6	SAMLTD	4000	4000 - SAMLTD	2019	06	CAD	F	01	0	-400000	-400000		
7	SAMLTD	4000	4000 - SAMLTD	2019	07	CAD	F	01	0	-400000	-400000		
8	SAMLTD	4000	4000 - SAMLTD	2019	08	CAD	F	01	0	-400000	-400000		
9	SAMLTD	4000	4000 - SAMLTD	2019	09	CAD	F	01	0	-500000	-500000		
10	SAMLTD	4000	4000 - SAMLTD	2019	10	CAD	F	01	0	-600000	-600000		
11	SAMLTD	4000	4000 - SAMLTD	2019	11	CAD	F	01	0	-700000	-700000		
12	SAMLTD	4000	4000 - SAMLTD	2019	12	CAD	F	01	0	-300000	-300000		
13	SAMLTD	4000	4000 - SAMLTD	2020	01	CAD	F	01	0	-300000	-300000		
14	SAMLTD	4000	4000 - SAMLTD	2020	02	CAD	F	01	0	-300000	-300000		
15	SAMLTD	4000	4000 - SAMLTD	2020	03	CAD	F	01	0	-400000	-400000		
16	SAMLTD	4000	4000 - SAMLTD	2020	04	CAD	F	01	0	-400000	-400000		
17	SAMLTD	4000	4000 - SAMLTD	2020	05	CAD	F	01	0	-400000	-400000		
18	SAMLTD	4000	4000 - SAMLTD	2020	06	CAD	F	01	0	-400000	-400000		
19	SAMLTD	4000	4000 - SAMLTD	2020	07	CAD	F	01	0	-400000	-400000		
20	SAMLTD	4000	4000 - SAMLTD	2020	08	CAD	F	01	0	-400000	-400000		
21	SAMLTD	4000	4000 - SAMLTD	2020	09	CAD	F	01	0	-500000	-500000		
22	SAMLTD	4000	4000 - SAMLTD	2020	10	CAD	F	01	0	-500000	-500000		

Save reports to Sage Intelligence

- Save all reports to Report Manager as templates
- Save each report with specific properties, filters, parameters, etc.
- No copy/paste every week/month, etc.



Report from across your business

- Include your business data from all Sage 300 modules; user-defined fields
- Include your business data from other sources outside of Sage:
 - SQL databases
 - Excel tables
 - Other, ODBC connections
 - Utilize existing Crystal queries



A look at the reports

Financial Reports



SAMLTD Regional Summary By Account Category

Current Year:	2020	Reporting Unit:		Reporting Unit:
Current Period:	1	DEMO>SAMLTD>COMMERCIAL>NORTHERN		DEMO>SAMLTD>RETAIL>NORTHERN
Company:	SAMLTD	DEMO>SAMLTD>COMMERCIAL>SOUTHERN		DEMO>SAMLTD>RETAIL>SOUTHERN
Currency:	CAD	DEMO>SAMLTD>COMMERCIAL>EASTERN		DEMO>SAMLTD>RETAIL>EASTERN
Currency Type:	F	DEMO>SAMLTD>COMMERCIAL>WESTERN		DEMO>SAMLTD>RETAIL>WESTERN

GroupCode	GroupName	YEAR TO DATE Commercial				YEAR TO DATE Retail			
		Northern	Southern	Eastern	Western	Northern	Southern	Eastern	Western
140	Revenue	4 576.55	6 714.44	1 601.56	12 163.60	4 945.78	5 335.13	3 153.26	2 664.29
150	Cost of Sales	1 921.08	3 057.56	836.83	4 341.77	2 522.35	2 400.81	1 639.70	1 332.15
	Gross Profit/(Loss)	2 655.47	3 656.88	764.73	7 821.83	2 423.43	2 934.32	1 513.56	1 332.14
160	Other Revenue	0.00	0.00	0.00	0.00	0.00	0.00	0.00	0.00
	Total Income	2 655.47	3 656.88	764.73	7 821.83	2 423.43	2 934.32	1 513.56	1 332.14
170	Other Expenses	0.00	0.00	0.00	0.00	0.00	0.00	0.00	0.00
180	Depreciation Expense	0.00	0.00	0.00	0.00	0.00	0.00	0.00	0.00
190	Gains and Losses	0.00	0.00	0.00	0.00	0.00	0.00	0.00	0.00
200	Interest Expense	0.00	0.00	0.00	0.00	0.00	0.00	0.00	0.00
210	Income Taxes	0.00	0.00	0.00	0.00	0.00	0.00	0.00	0.00
	Net Profit	2 655.47	3 656.88	764.73	7 821.83	2 423.43	2 934.32	1 513.56	1 332.14

SAMLTD Income Statement Forecast

Current Period: 1
Company: SAMLTD
Currency: CAD
Currency Type: F

GroupCode	GroupName
140	Revenue
150	Cost of Sales
	Gross Profit
160	Other Revenue
	Other Expenses
	Earning (Loss) From
200	Interest Expense
	Earnings (Loss) Before
210	Income Taxes
	Net Income (Loss)
	Revenue Growth
	Cost of Sales Percentage
	Other Expense Percentage
	Adjustments:
	Revenue Growth
	Cost of Sales Percentage


SAMLTD Balance Sheet Forecast

Current Period: 1
Company: SAMLTD
Currency: CAD
Currency Type: F


GroupCode	GroupName	Year		Projected		
		2019	2020	2021	2022	2020
Assets						
10	Cash and Cash Equivalents	2 748 523.60	7 912 363.97	9 124 328.73	9 887 565.40	10 369 665.24
	Accounts Receivable	1 968 826.08	3 007 920.24	1 884 520.50	1 180 688.73	739 724.44
30	Inventory	1 873 135.81	1 928 978.06	1 208 542.25	757 175.22	474 384.99
	Current Assets	6 590 485.49	12 849 262.27	12 217 391.49	11 825 429.34	11 583 774.68
50	Fixed Assets	762 888.79	1 062 888.79			
60	Accumulated Depreciation	(327 426.42)	(802 426.42)			
	Fixed Assets, net	435 462.37	260 462.37	260 462.37	260 462.37	260 462.37
70	Other Assets	0.00	0.00			
	Total Assets	7 025 947.86	#####	12 477 853.86	12 085 891.71	11 844 237.05
Liabilities						
90	Other Current Liabilities	981 168.82	971 872.89	5 137 788.14	7 752 072.32	9 394 229.54
80	Accounts Payable	11 240 492.98	12 993 043.12	8 140 394.10	5 100 115.15	3 195 321.29
	Total Current Liabilities	12 221 661.80	13 964 916.01	13 278 182.24	12 852 187.47	12 589 550.83
	Long Term Liabilities	432 963.54	288 963.54	288 679.83	288 503.85	288 395.34
	Total Long Term Liabilities	432 963.54	288 963.54	288 679.83	288 503.85	288 395.34
	Total Liabilities	12 654 625.34	14 253 879.55	13 566 862.07	13 140 691.31	12 877 946.17

Financial Ratios

sage

 SAMLTD Fin

Current Period:
Company:

 Financial Ratio

KEY METRICS [Click to c](#)

Gross Profit (Loss)

993 290.63

↓ -43%

ALL RATIOS

Profitability Ratios

Profit Margin

Return on Assets (ROA)

Return on Equity (ROE)

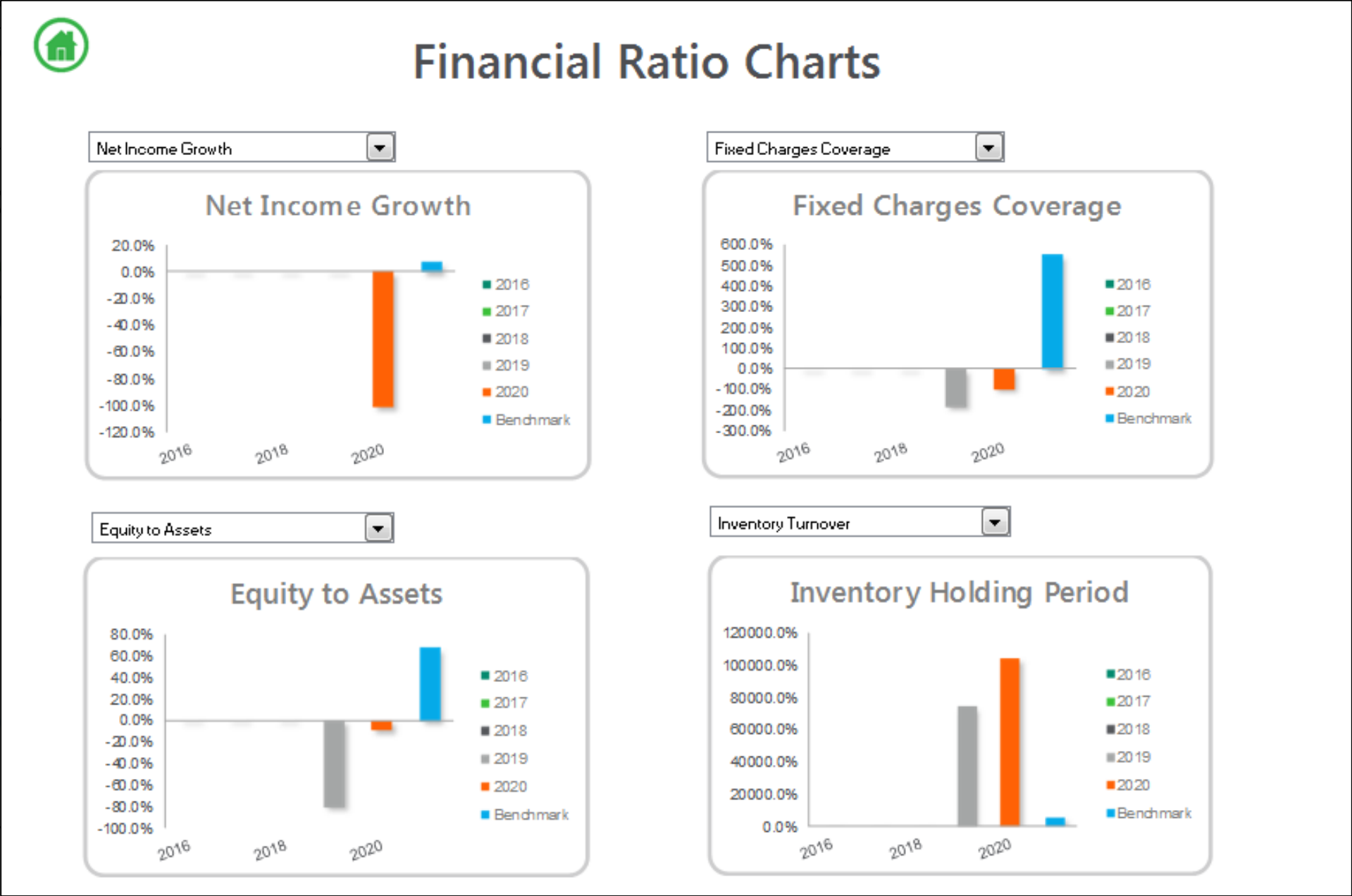
Dividend Coverage

Gross Margin %

Return on Capital Employed (ROCE)

Asset Utilization Ratios

Receivables Turnover



Sales Reports



Sample Company Limited

Sales Flash Report for the period 01 Jan 2019 to 31 Jan 2021

Total Sales for the period :
1 407 769.17

17 customers were invoiced during this period.
Astral Construction Co Ltd. - 506 668.37, had the highest sales and The Yoshida Gardens - 6 054.00, had the lowest sales for the period.

Daily sales on : 01-Jun-20
1 255.56

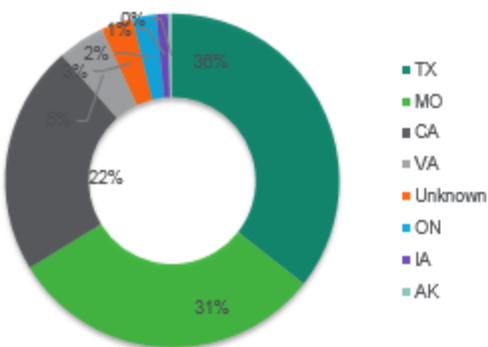
Select date for daily sales

Average sale for the period 140 776.92
Highest sale for the period 506 668.37
Lowest sale for the period 6 054.00

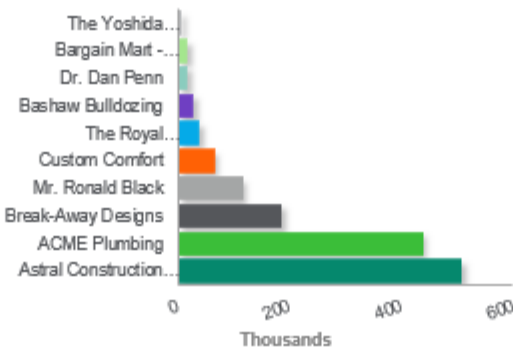
Bill Bhaissou was the top sales person, selling 57.81% of the sales and David Sanjos was the lowest sales person, selling 0.03%.

Daily average sale 378.28
Daily highest Sale 511.98
Daily lowest Sale 94.05

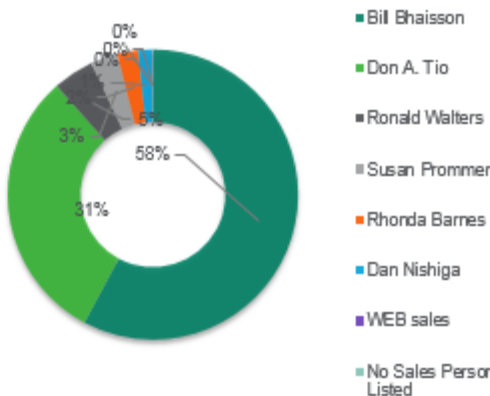
Top 10 States sales



Top 10 Customer sales




Top 10 Sales Rep contributions



Purchasing, Inventory and more

sage

<div>  Inventory Master AS OF 04 Jan 2019 </div>										
Category Code-Name (All)		ITEM ACTIVE (All)								
Item Code-Name	LOCATION	CostUOm	Stock Un	Qty On Hand	PO Qty	SO Qty	Qty Incl Orders	MostRecentCost	Total Average Cost	Total Most Recent Cost
A11030 - Fluorescent Desk Lamp				657.00	426.00	34.00	1 049.00	151.86	18 080.34	20 074.85
1		Ea.	Ea.	137.00	250.00	15.00	372.00	29.21	3 984.67	4 001.50
2		Ea.	Ea.	262.00	50.00	9.00	303.00	29.76	6 446.77	7 796.20
3		Ea.	Ea.	42.00	126.00		168.00	30.65	1 259.67	1 287.47
4		Ea.	Ea.	206.00		10.00	196.00	32.49	6 091.66	6 632.12
TRANS		Ea.	Ea.	10.00			10.00	29.76	297.57	297.57
A11050 - 13W Mini Fluorescent Bulb				378.00	510.00	23.00	865.00	19.90	1 872.17	1 895.55
1		Ea.	Ea.	70.00	80.00	15.00	135.00	4.90	343.98	342.78
2		Ea.	Ea.	143.00	30.00	8.00	165.00	5.21	723.35	744.82
3		Ea.	Ea.	75.00	150.00		225.00	4.90	367.26	367.26
4		Ea.	Ea.	90.00	250.00		340.00	4.90	437.58	440.69
A13100 - Halogen Desk Light				443.00	800.00	50.00	1 193.00	141.97	15 445.89	15 882.12
1		Ea.	Ea.	128.00	150.00	50.00	228.00	36.61	4 439.13	4 685.44
2		Ea.	Ea.	165.00	25.00		190.00	36.61	5 850.07	6 039.99
3		Ea.	Ea.	75.00	25.00		100.00	34.38	2 578.34	2 578.34
4		Ea.	Ea.	75.00	600.00		675.00	34.38	2 578.35	2 578.35
A13200 - 50W/12V Halogen Bulb				135.00	510.00		645.00	20.51	677.52	702.82
1		Ea.	Ea.	80.00	250.00		330.00	5.28	397.20	422.50
2		Ea.	Ea.	30.00	30.00		60.00	5.03	150.76	150.76
3		Ea.	Ea.		30.00		30.00	5.03		
4		Ea.	Ea.	25.00	200.00		225.00	5.18	129.56	129.56
A14000 - Desk Note Book				542.00	850.00	3.00	1 389.00	48.11	6 399.59	6 653.94
1		Ea.	Ea.	190.00	200.00		390.00	14.41	2 319.71	2 737.77
2		Ea.	Ea.	170.00	250.00		420.00	10.75	1 953.98	1 826.99
3		Ea.	Ea.	150.00	200.00		350.00	11.48	1 752.11	1 721.85

How do I get started?



Contact your Sage Partner



Get started today!

- Check to see if you have Sage Intelligence in the menu of your 300Cloud solution
- If not, contact **Equation** to activate your 1 free license for Report Manager
- If you have Report Manager, run one of the standard report templates to view your data

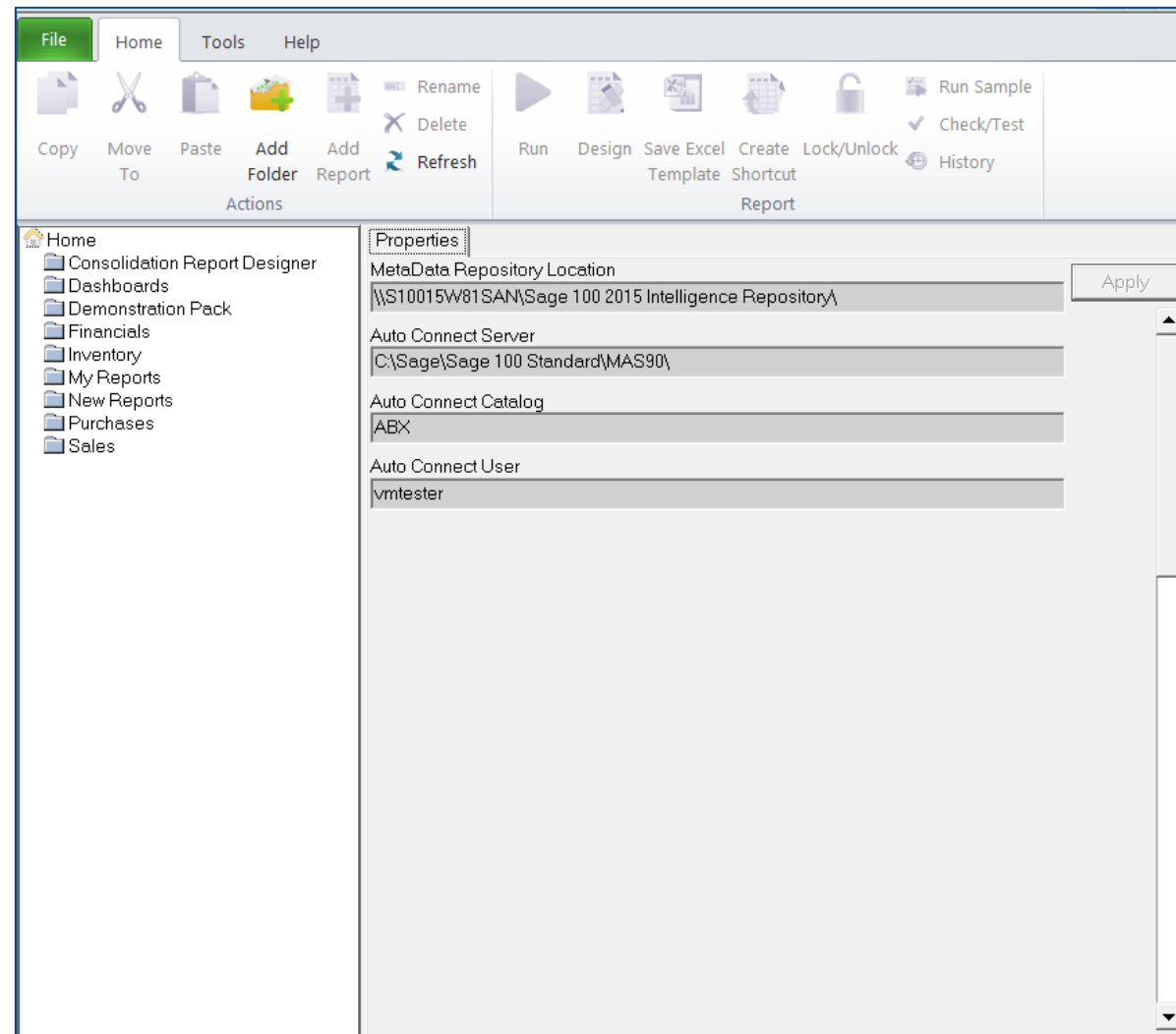
Contact your Sage partner



support@equationtech.us
866.436.3530 Option 2



Run your standard reports from Report Manager



**Where can we find
more information?**



Sage Intelligence Learning Portal



www.sageintelligence.com/Learning

The screenshot shows the Sage Intelligence Learning Portal homepage. At the top, there is a navigation bar with links for Community, Academy, Blog, About Us, and Contact Us. On the right side of the bar is a dropdown menu for "United States of America". Below the navigation bar is the Sage Intelligence logo, followed by links for Solutions, Resources, Learning, and Support. The main content area features a large background image of a woman in a white blazer looking at a tablet. Overlaid on this image is the text "Get Easy, Flexible reporting" in a large, white, sans-serif font. Below this text is a smaller line of text: "Have the confidence to make timely, more informed business decisions with accurate insights into your data." At the bottom of this section is a pink button with the text "Find out more" and a right-pointing arrow. Below the main content area is a white section with a paragraph of text: "Sage Intelligence is Sage's flexible reporting solution, available in the cloud and/or on-premise for Sage Accounting, Business Management Solutions and payroll solutions that eliminate blind spots with meaningful reports."

Community | Academy | Blog | About Us | Contact Us

United States of America

sage Intelligence

Solutions | Resources | Learning | Support

Get Easy, Flexible reporting

Have the confidence to make timely, more informed business decisions with accurate insights into your data.

Find out more >

Sage Intelligence is Sage's flexible reporting solution, available in the cloud and/or on-premise for Sage Accounting, Business Management Solutions and payroll solutions that eliminate blind spots with meaningful reports.



*And when you're ready, get
your **Sage user certification!***

Continue your education!

Sage University has an extensive library of learning topics. Check out these courses:

- Sage Intelligence Beginner
- Sage Intelligence Intermediate
- Sage Intelligence Advanced
- Sage Intelligence Financials

For more information:
visit www.SageU.com,
call 855-724-3864, or email
SageUniversity@sage.com

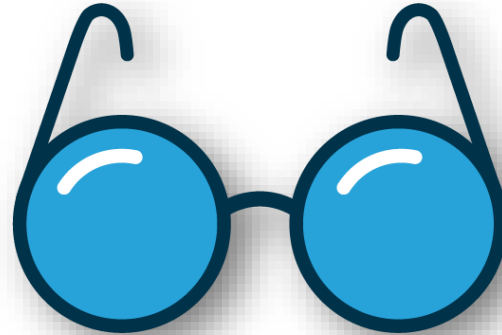
Need Training? Have Questions? Want Advice?

sage

Engage with Sage—online:



Sage University



Sage Knowledgebase



Sage City

www.SageCity.com/Resources

Thank you

