

See your business in a new way with Sage 300

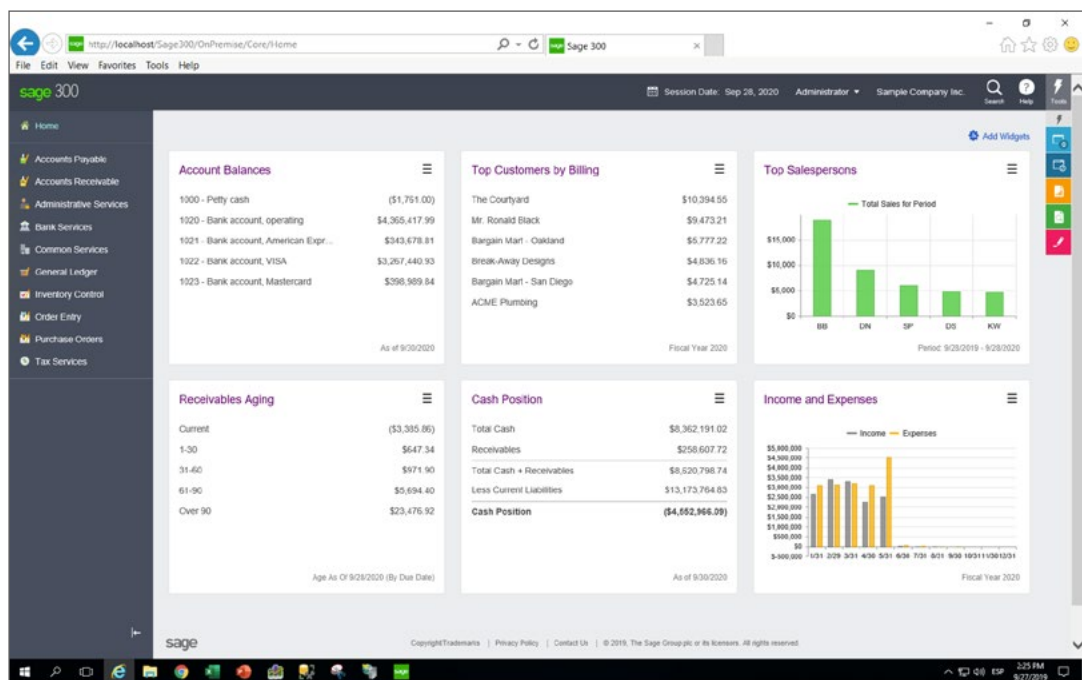
*Greater visibility for fast, effective
decision making.*





Manage your business

Sage 300 offers your team a comprehensive view of all aspects of your business whether you're at the office or on the go. Simply sign on and get to work.



What is Sage 300?

Sage 300 helps small and medium businesses manage their entire business across geographies without the cost or complexity of traditional enterprise resource planning (ERP) software. The preferred solution for tens of thousands of companies across the globe, Sage 300 connects the most important aspects of your growing business, including:



Financials



Business intelligence and reporting



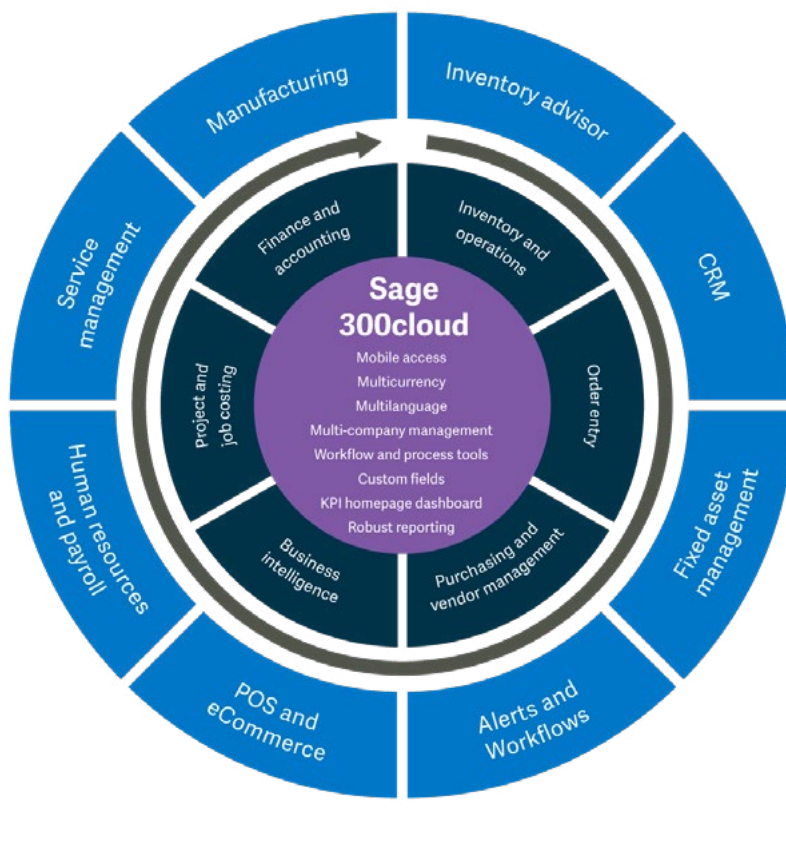
Operations and inventory



Sales, marketing and customer service



Project and vendor management



The advantages keep coming. Sage has an extensive network of Independent Software Vendors whose add-on solutions extend Sage 300 ever further to meet the specialised needs of your business.

Take the complexity out of managing your finances

With Sage 300, you will have an accurate, real-time understanding of your financial position, whether it's cash flow, receivables, or payables across multiple locations, companies, currencies, and international borders. Configurable, simple to use, and accessible from anywhere, Sage 300 helps you stay on top of your business and address financial issues before they become real problems.

Comprehensive accounting and financial management

- General Ledger
- Accounts Payable
- Accounts Receivable
- Payment Processing
- Bank Reconciliation
- Check and form printing
- Multicurrency support
- Consolidated financials across multiple companies

Be compliant wherever you do business

Sage 300 helps you manage complex finances and remain compliant with government regulations such as:

- Generally Accepted Accounting Practices (GAAP)
- General Data Protection Regulation (GDPR)
- International Financial Reporting Standards (IFRS)
- California Consumer Privacy Act (CCPA)

Powerful yet simple

Keep your general ledger up to date in real time and meet your most demanding budgeting and processing needs to maximise the efficiency and accuracy of your financial data with Sage 300.

- Store up to 99 years of financial data
- Balance your books at every step
- Manage up to ten different account segments
- Print or email reports instantly
- Configure Sage 300 to your unique processes and preferred practices
- Set up recurring GL entries
- Easily import transactions from other applications or export data

“We get the detail we need for successful day-to-day operations, and the owners get the summarized information they need for long-term planning.”

Marcus De La O, director of finance, Grand Beach Hotel, Miami Beach



Manage payables with ease

Streamline your entire cash flow process and save money. Sage 300 ensures rapid entry of vendor invoices, flexible cash disbursement, and check reconciliation. You can prioritise payments, negotiate terms, and reduce bad debts.

- Organize vendor records quickly and easily.
- Import transactions from other applications.
- Automatically distribute invoices to as many general ledger expense or asset accounts as you require.
- Set up and schedule recurring payables for invoices paid on a regular basis.
- Automatically calculate tax for vendor invoices or manually distribute tax.
- Print checks in multiple languages, including English, French, and Spanish.

Easily manage multiple companies

When you're keeping track of dealings between multiple entities or subsidiaries, Sage 300 reduces the work required for intercompany accounting. Whether you operate as one company, 10 divisions, or 100 entities, you'll reduce redundant data entry and focus on more revenue-generating activities.

Intercompany transactions in Sage 300 allows you to enter General Ledger and Accounts Payable transactions affecting more than one company and automatically distribute transactions across two or more companies. You can set up multiple companies, close books, and report results by company or consolidated company.

Simplify international commerce and user support

Managing the complexities of a business across geographies is not easy, but Sage 300 makes it far less complicated. With Sage 300, you can easily manage international commerce across multiple companies or subsidiaries. You'll have tools to easily maintain an unlimited number of currencies and exchange rate schedules, update exchange rates daily, and post gains or losses from currency fluctuations.

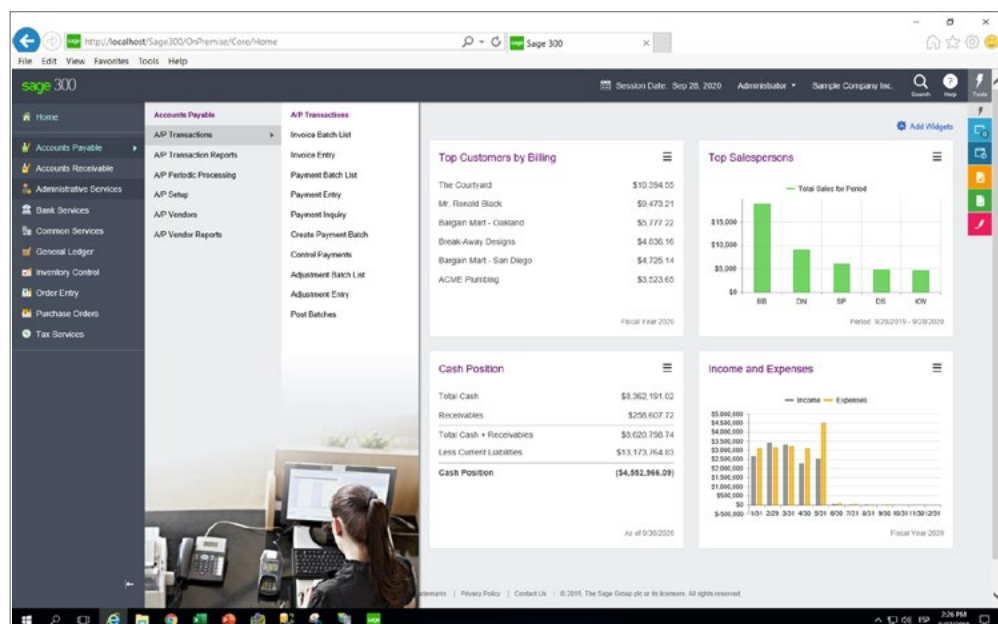
Multilanguage support for English, French, simplified and traditional Chinese, and Spanish is included with Sage 300 and translatable for additional languages throughout the system.

Get paid painlessly

With Sage 300, you'll effectively manage your cash flow; track purchase patterns; automate tax calculations, discounts, commissions and due date, and much more. With the help of built-in calculations, you have full control of your receivables and invoicing and save countless hours avoiding errors and eliminating duplicate data entry.

Bank reconciliation in minutes

With Sage 300, you can quickly and accurately reconcile your bank accounts and perform banking transactions with pinpoint accuracy.



Ship orders on time, manage inventory across multiple locations

With Sage 300, you'll delight customers, vendors, and your own employees by integrating disparate processes across multiple warehouses, inventory, production, and service departments. Faster, more accurate fulfillment results in satisfied customers, quicker payments, and much greater profitability.

Optimize your inventory

Assert control over your inventory processes and reduce carrying costs while delivering orders on time. With Sage 300, you can easily take charge of inventory receipts, shipments, returns, and adjustments with multilocation inventory tracking capabilities.

With easily accessible, real time information, make better business decisions regarding what merchandise to stock, pricing, discontinued items, and trend analysis to best

determine what's selling and what to market.

Sage 300 offers real-time visibility to inventory data including receipt, shipping information, returns, disposition of goods, and precise value. It also allows you to obtain detailed, current inventory information on demand.



“With real time data, actionable reports and simplified vendor onboarding and invoicing, Sage helps us run our business from end to end.”

Caroline Russell, CEO, BOH Tea



www.equationtech.us

sage 300

Phone: 866.436.3530

Manage every aspect of distribution

Strategically manage every aspect of the distribution cycle.

- Inventory Control with Serialized, Lot, and Bin Tracking
- Sales Processing
- Purchase Order
- Purchasing and Workflow management
- Project and Job Costing
- Manufacturing
- Analytical Dashboard with Sage Intelligence
- Set up detailed quotes, back orders, cancellations, shipments, and prepayments.
- Establish data-entry defaults so you can see customer information quickly.
- Gain real-time insight into stock levels, customer details, and shipping information.
- See and enter orders in the currency of your customers.
- View or print reports of transaction details and sales information.
- Track multiple payment schedules and other payment terms.

Streamline order and shipping processes

Are your accounting or customer service teams overwhelmed with questions on shipment status, billing, item availability, or returns? Are they tracking orders manually and relying on shop-floor or warehouse staff to determine what's in stock and what can be shipped?

With Sage 300, your employees will be continuously aware of inventory levels and customer account changes such as alternative items. You will eliminate redundant data entry and automate workflow as well as:

Strengthen vendor relationships, interaction with streamlined purchasing

Make the right decisions sooner by automating - and adding visibility - to every facet of your purchasing process. Sage 300 keeps you in sync across process requisitions, purchase orders, receipts, invoices, and returns to save you time. All that transparency means everyone works from the same, real-time intelligence. What better way to keep building stronger relationships with your vendors?

"I know exactly what is on each order and what each of our different accounts owe us. This has cut order-writing time by more than half and put accurate information at my fingertips."

Marni Kontturi, office manager, Clarke Phillips Safety Supply Ltd.



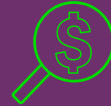
Effectively manage projects and track job costs

Keep projects on schedule and on budget with flexible estimating, tracking, and project billing in Sage 300.

With Sage 300 project job costing, you're better equipped to:



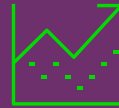
Control project costs



Track costs and revenue down to the finest details on every project



Manage contractors and subcontractors



Track and monitor original projections and actuals

All costs, payables, and receivables can roll up to each area of the project. Overhead, equipment, and materials are allocated to ensure the project is on time and on budget.

Grow your customer base

With Sage 300 and integrated **Sage CRM**, you can have end-to-end visibility of your sales and marketing activities and a single view of the customer across your organisation. Open up new opportunities for growth with greater insight into business performance, better efficiency and productivity and more effective communications.

You have the tools at your fingertips to find new customers, reduce sales cycles, and build lasting, more profitable relationships.

- Track your sales opportunities from lead generation to close
- Exceed your customers' expectations with outstanding customer service and support
- Plan, execute, and evaluate the success of your marketing campaigns with ease
- Enable your workforce to access customer information anytime, anywhere with mobile access



“We need a software solution that is accurate and reliable throughout our entire organization, in every country.”

Robin Lim Seng Hoo, Operations and Admin Manager, Cairnhill Metrology Pte Ltd



Track employee time and take charge of payroll

Keep track of employee time, process payroll and manage employee benefits - all with one simple to use module.

Automated Payroll Process

Get the efficiency of automated payroll without breaking your budget, straining internal resources, or compromising on functionality and compliance.

Multi-company and Multi-currency

Assess and control overall payroll costs among various divisions and process payroll in a variety of currencies.

Comprehensive Reporting

Easily accessible reports and drill-downs provide detailed, summary, and exception reports to exceed payroll processing requirements.

Pay Date	Day of the Week	Earning/Exp/Tip/Accrual ...	Start Time	Stop Time	Hours Worked
11/2/2019	Saturday	HOURLY	00:00	00:00	8.00
11/3/2019	Sunday	HOURLY	00:00	00:00	8.00
11/4/2019	Monday	HOURLY	00:00	00:00	8.00
11/5/2019	Tuesday	HOURLY	00:00	00:00	8.00
11/6/2019	Wednesday	HOURLY	00:00	00:00	8.00
11/7/2019	Thursday	HOURLY	00:00	00:00	8.00
11/8/2019	Friday	HOURLY	00:00	00:00	8.00
11/9/2019	Saturday	HOURLY	00:00	00:00	8.00
11/10/2019	Sunday	HOURLY	00:00	00:00	8.00
11/11/2019	Monday	HOURLY	00:00	00:00	8.00

Employee timecards are now available in Sage 300 web screens for remote access functionality.

“[Sage 300] saves me countless hours of work since I never have to rekey data. It feels great that I can deliver a much higher level of service to all of my colleagues and that everyone receives their benefits exactly when they are supposed to.”

Cheryl Hodkinson, bookkeeper, North Bend Medical Center



Make faster, more informed business decisions

Sage Intelligence gives you meaningful insights into your business.

Sage Intelligence gives you a holistic view of your business by seamlessly consolidating your data from Sage 300, reducing spreadsheet chaos, and improving collaboration across your business. With Sage Intelligence, you can automatically run and distribute fully customizable reports in Microsoft® Excel®, so you spend more time analyzing the data, and less time locating and preparing it. You have the choice to either customise the ready-to-use reports or create new reports to suit your business's unique requirements, ensuring that visibility of your information is always just a click away.

Reports are accurate and up to date, and allow you to see the data immediately, without having to export data or manually create reports. KPIs give you a pulse of your business, while drill-down capabilities allow you to see the data that makes up the numbers and have an impact on your decisions. You will also enjoy full control over your financial reports

with a drag-and-drop Report Designer tool that is exclusive to Sage Intelligence.

Let us help you succeed

Ninety-eight percent of Sage customers¹ rely on data to either support or aid in their decision-making processes. However, there's never enough time to sort through the waves of spreadsheets, presentations, reports, and databases to find and analyse the data needed to make the best decisions. Sage Intelligence helps you come to grips with your business's data, so you can make business decisions with confidence.

"Since we implemented [Sage 300], we are saving 20-30 hours each month in accounting tasks, and we have increased revenues."

Allan Schmidt, president, Vineland Estates Winery

¹ This statistic comes from a survey we at Sage conducted with our customers in 2015

Craft customer responses and proposals more easily with Office 365

Sage 300 with Office 365 integration is for small and medium sized businesses who want to radically improve their efficiency, save time and increase effectiveness.

Previously Sage 300 users had to toggle constantly between Outlook applications and Sage to sync and obtain crucial customer, partner and vendor information. In addition to being tedious, this process was slow and susceptible to errors.

Now, with Office 365 integration, Sage 300 users can access the information they need faster and more easily. It even means new types of users can access important information from Sage 300 right in their familiar Office 365 environment.

Before: Your business had limited access to key business accounts

Your sales rep had to rely on colleagues back at the office to keep her informed and up to date

Wasted Time

It took a lot of time and it was labour intensive to get the required customer information when she needed it

Lack of business insight

Without access to her client credit status or most recent transactions on Outlook, she was often one step behind during her meetings

Inefficiencies

With limited Outlook integration, she couldn't respond quickly to clients when she had payments queries

Now: With access to Sage 300 accounts in Office 365

Your sales rep can **finally grow her accounts** without worrying about going back to the office or calling colleagues for last minute requests prior to visiting clients.



She also has a much faster view of her client's payments data to stay on top of things.



She has more time to visit more customers as she simply adds memos of her latest client meetings in Outlook.



She can quickly mail back her clients about their most recent transactions as it's now available on her Office 365 app.



She can make smarter sales decisions as she can view her client's credit status and balance.



She can be more collaborative and share key client's insight with colleagues knowing that Microsoft's cloud-compliant environment is safe, trusted and secure.

Office 365 integration with Sage 300 now means your employees can achieve more in their deal, provide better customer service and close more opportunities.

Why Sage?

Sage is the market leader for integrated accounting, payroll, and payment systems, supporting the ambition of the world's business leaders. Today we work with millions of businesses in all types of industries around the world. Our 13,000 employees serve our customers in 23 countries throughout Europe, Africa, Australia, Asia, and North America. For more information about Sage, please [visit the Sage website](#).

About Equation Technologies

Equation Technologies provides business management solutions for mid-sized companies in the USA and Canada. We make carefully crafted recommendations from among the industry's best-performing ERP software, including Sage Intacct and Sage 300. We help you **reduce the risk in choosing and implementing solutions** by:

- Listening closely to your challenges and exactly how your business works.
- Developing processes that match your business, not requiring you to conform to a software system.
- Mapping out efficiencies using technology to improve operations without adding staff.

Our main goal is simple: have a clear understanding of our clients' goals. We believe the only way to sufficiently grasp that information is by listening first, and offering valuable advice later. We also know that one single approach is not right for all businesses. We leverage our team's vast education and business experiences across industries to focus on our clients' unique needs. We understand the importance of your business. We know when you call on us, time is of the essence and we value & respect your time.

Equation Technologies

533 2nd Street

Encinitas, CA 92024

866-436-3530

www.equationtech.us

