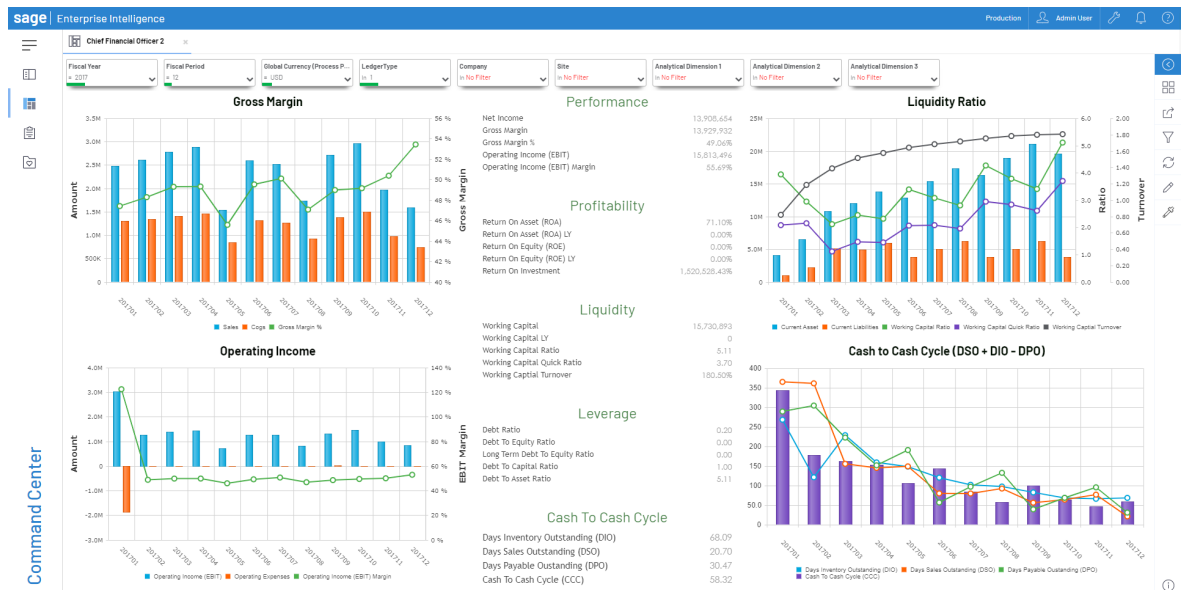


Manage your data

Manage data from multiple sources and locations using the extract, transform, load (ETL) process that blends data and prepares it for analysis and reporting in SEI. With SEI DataSync, you can cut down on the time and costs of additional labor or tools for prepping or cleaning data and continue to make business decisions on data that you can trust. Migrate data from legacy or third-party systems, consolidate data between disparate databases and centralize data into a data warehouse.

Achieve quick ROI

Why develop complex data models when SEI provides out-of-the-box views and dashboards tailored to your ERP system? These pre-configured templates require minimal set-up and are ready to use from day one. Our Universal Data Models can consolidate and access large amounts of data and provide KPIs for Finance, Sales, Inventory, and CRM. Whether you use the predefined reports, or choose to create your own, SEI has everything you need to analyze your enterprise's performance.



Key features

BUSINESS INTELLIGENCE

- Real-time reporting
- Pre-built templates for views, dashboards, and reports
 - Drilldown
 - Slice and dice
 - Filtering and sorting
 - Conditional formatting
- Excel add-in
- Sales forecasting and financial budgeting
- Data modeling
- Universal Data Models
- Report export (CSV, XLSX, XML, PDF, HTML)
- Available through web, mobile and Excel
- Embedded analytics
- Available on-premises or in the cloud

DATA MANAGEMENT

- Data warehousing
- Data prepping using ETL
 - Filtering and transformation
 - Addition of calculated fields
- Multi-source consolidation
- Migration of legacy systems
- Export to flat file
- Multiple data connectors (on-premises or cloud)
- Full and incremental data refresh
- Includes extraction templates



For more info, visit: www.sage.com/en-us/products/enterprise-intelligence/

©2020 The Sage Group plc or its licensors. Sage, Sage logos, Sage product and service names mentioned herein are the trademarks of The Sage Group plc or its licensors. All other trademarks are the property of their respective owners. NA/WF 183498.