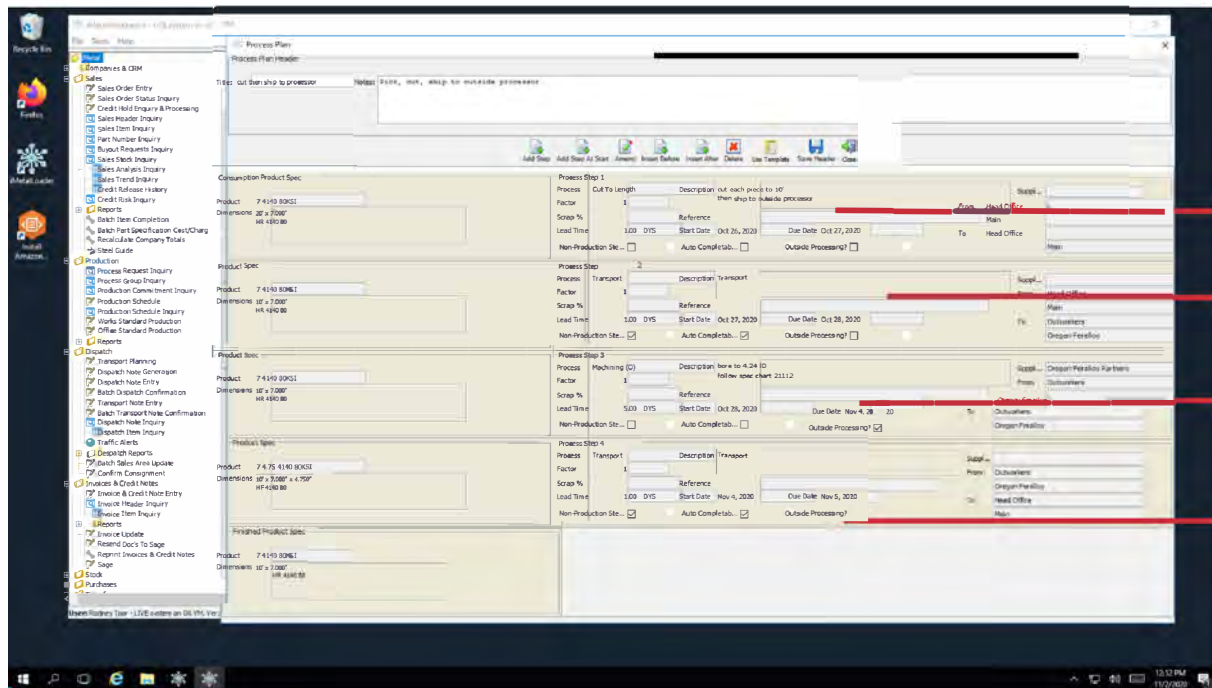




Introducing *iMetal* Production



Picking
 Processing
 Shipping
 Outside
 Processing
 Return Shipping

Set up Multiple Stage production orders from within Sales Order with complete costing





Multi-Line | Flat Rolled | Stainless | Aluminum Alloy | Aerospace | Copper | Brass | Bronze

Software for Metals Service Centers

Complete Production Status Tracking



Stock Allocations

Production Steps

Production Allocations

Production

Deliver products on time by planning supply and production in real time, ensuring the right resources are in the right place.

Predictive analytics to optimize and automate inventory, warehousing, fulfillment, material sourcing, and supply chain logistics.

Build agile manufacturing processes with predictive technologies, mobile devices to improve throughput, quality, and delivery while reducing costs.

Streamline production allocation and resource planning while minimizing overtime and improving equipment utilization.

Enrich demand forecasting without over stocking inventory.

Scheduling and Capacity Planning

Drag-and-drop scheduling and capacity planning lets you immediately identify and fix shortages and overloads with a click of the mouse:

- View day-to-day work center capacity by labor or machine hours on a single, easy-to-read graphical display.
- Our production management software allows you to create and manage schedules for all firm, released and in-process work orders.
- Level loads by dragging work order operations from one day to another.

Processes:

- Angle Processing
- Beam Cambering
- Blanchard Grinding
- Drilling & Punching
- Flame Cutting
- Laser Burning
- Plate Burning
- Plasma Cutting
- Plate Rolling
- Plate Shearing
- Press Brake
- Saw Cutting
- Tee Splitting
- Shearing
- Embossing
- Cold Reduction
- Annealing
- Temper Pass
- Oscillating
- Edge Conditioning



Process Step Maintenance

Process	Machining (0)	Est. Setup Time	23	minutes per	CWT
		Est. Run Time	44	minutes per	CWT
Production Factor	1	<input type="checkbox"/> Non-Production Step?			
Scrap %		<input type="checkbox"/> Auto Completable?			
Lead Time	5.00	Dys			
Process: Branch	Outworkers	Warehouse	Oregon Feralloy	<input checked="" type="checkbox"/> Outside Processing?	
				<input type="checkbox"/> Transport?	
From: Branch	Outworkers	Warehouse	Oregon Feralloy	Supplier	FERALLOY
				Cost	123 / Pcs
To: Branch	Outworkers	Warehouse	Oregon Feralloy	Product	OUTWORK
Packing Requirements					
		Minimum	Maximum		
Pack Weight	1234	600	1500	Lbs	
Pack Height	1	23	400	mm	
Pack Count		2	2		
Invoice Packing?	<input checked="" type="checkbox"/>				
Coil Details					
		Minimum	Maximum		
Inside Diameter	4.25			mm	
Outside Diameter	6			mm	
Reference	122344				
Notes:	<p>Machining to spec 23344</p> <p>Machine to spec 23344</p> <p>SIZE 6.25 O.D. 0.07</p> <p>Bore 1.25 thru baz</p>				

Every Process Step is an order within an order with complete processing information , costing information, specifications, packaging and shipping instructions

Scheduling – Plan production orders, determine start and end dates and assess capacity and ability to meet deadlines. Communicate the plan to production with real-time feedback as production executes.

Job Tracking –Track production order progress through the factory for each manufacturing operation or for each batch process.

Downtime – Machine downtime is recorded downtime analysis and reporting then identifies opportunities for improvement.

Production Totals – Record production quantities during the production run in real-time, by picking up counts from the production lines and equipment. Calculate KPIs such as production efficiency and actual cycle times.

Scrap – Record production scrap manually or automatically. Analyze waste with real-time data capture to help reduce losses.

Performance – Collect and analyze production performance data in the production module for each production process. Improve production efficiency and accountability.

Labor – Track where labor hours have been spent. Define target manpower on the product routing. Control costs. Improve exception management. Support traceability.



Our customers don't care how much we know, until they know how much we care.

Our client facing team members have many years of experience working in and supplying the metals sector with functionally specific software. Our consultants are focused on delivering results with minimum cost and maximum attention to detail, ensuring you get a return on your investment, not just a good-looking set of screens.

Equation Technologies and Jonas Metals work together to bring a complete ERP solution by combining Sage Intacct's best-in-class financial management with iMetal's game changing industry functionality in the USA, Canada, and the United Kingdom.



Equation Technologies
533 2nd Street Encinitas, CA 92024
866-436-3530
www.equationtech.us